

STEP MELANGE



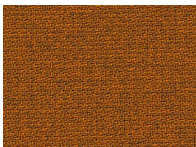
SPECIFICATION

Material Type	Fabrics	Weight	336
Supplier	Gabriel	Durability	> 50 000 cycles Martindale
Pattern	Melange	Lightfastness	≥5
Composition	100% Trevira CS		

ABOUT

Step Melange is a good choice for furniture that has to cope with tough environments. Its high resistance to dirt makes it a good choice even in user-intensive environments such as schools, hotels and health care facilities. The fabric is also washable at 60°C and woven with the flame-retardant Trevira CS fabric, which complies with the most stringent fire protection requirements on the market. The colour palette is inspirational, with a mix of nature's own bright tones.

COLOURS IN THE STEP MELANGE SERIES



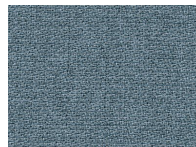
Step Melange 5023



Step Melange 5030



Step Melange 5049



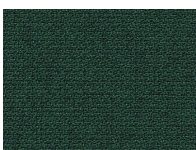
Step Melange 5051



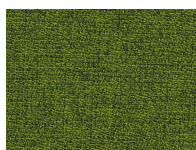
Step Melange 5059



Step Melange 5069



Step Melange 5072



Step Melange 5075



Step Melange 5092



Step Melange 5098

STEP MELANGE



STEP MELANGE FULFILLS THE FOLLOWING STANDARDS:

- | | | | |
|---|------------------------------------|------------------------------------|-------------------------------------|
| ✓ EN ISO 12947-2+AC 12
KPA
EN ISO 12947-2+AC 12 KPa | ✓ EN ISO 12945-2
EN ISO 12945-2 | ✓ EN ISO 105-B02
EN ISO 105-B02 | ✓ EN ISO 13936-2
EN ISO 13936-2 |
| ✓ EN ISO 105-X12
EN ISO 105-X12 | ✓ EN ISO 105-D02
EN ISO 105-D02 | ✓ EN ISO 105-D01
EN ISO 105-D01 | ✓ ISO ISO 105-C06
EN ISO 105-C06 |
| ✓ ISO ISO 105-E16
EN ISO 105-E16 | ✓ EN ISO 105-E04
EN ISO 105-E04 | ✓ EN 1021-1:2014
EN 1021-1:2014 | ✓ EN 1021:2:2014
EN 1021-2:2014 |

INSPIRATION

